

BTL

a guide to laser therapy

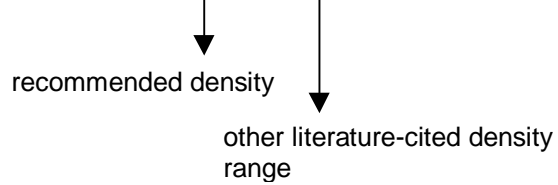
dermatology

List of Diagnoses:

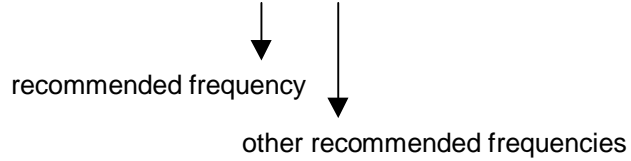
Acne
Alopecie
Cicatrix cheloidum
Cicatrix recens
Combustio
Decubitus
Dermatitis
Dermatitis perioralis
Eczema
Furunculus
Haematoma
Herpes simplex, zoster
Lichen planus
Rosacea
Sanatio postoperativa
Striae
Ulcus cruris

Comments:

- Recommended density (J/cm^2).....2.0 (1.0 – 3.0)



- Recommended frequency (Hz).....10.0 (9.12)



- 1st part of therapy
2nd part of therapy..... refers to therapy consisting of 2 different programs.

- Therapy time at max. output (min.)..... therapy time in minutes if maximal output of probe and irradiated area 1cm^2 are set.
Considered maximal output of red probe is 30 mW, infrared probe 200 mW.
Warning! You must adjust the area value according to the size of irradiated area. Change of area will influence therapy time.

This Guide to laser therapy has been written in cooperation with top medical specialists in the field of laser therapy. It has been based on physicians' everyday experience with use of therapy lasers in their practice, as well as on publicly available articles and books on the subject.

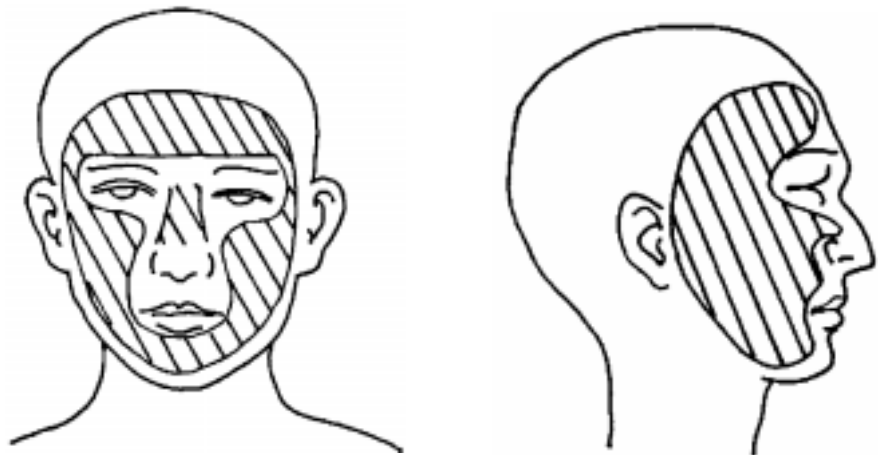
© All rights reserved. No parts of this manual may be reproduced, saved in a research center or transferred by any means incl. electronic, mechanic, photographic or other records without previous approval by BTL.

BTL operates a policy of continuous development. Therefore, it reserves the right to make changes and improvements to the Product described in this manual without prior notice.

BTL

Diagnosis: Acne

Programme No: 0400



Recommended density (J/cm ²)	2.0 (2.1 - 3.6)
Recommended frequency (Hz)	5.5
Therapy time at max. output (in min.)	1.23
Number of treatments per week	1 - 2
Number of treatments total	varies
Recommended BTL probe	red
Recommended output of BTL probe	30 mW

Comment:

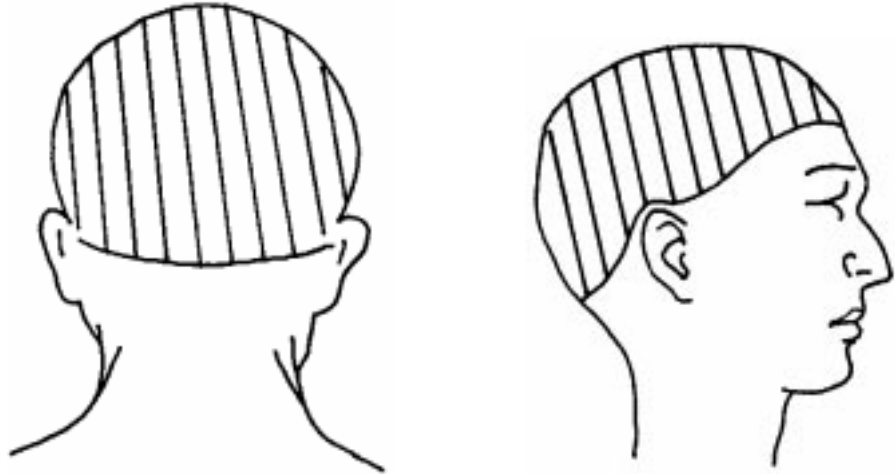
- Irradiate the affected surface.
- After 2 - 4 irradiation sessions, skin condition improves, fibroblast stimulation occurs, collagen production increases, and pustules dry out after several irradiation sessions.
- Improvement occurs after several sessions.
- Irradiation effect is temporary for hormonal disorders.
- Acne juvenilis: Laser therapy favourably affects microcirculation, creates defensive antiseptic elements, and helps prevent permanent scars.
- Acne vulgaris: Begin irradiation around the edges of the focus, and work towards the center..

BTL

Diagnosis: **Defluvium capillorum**

(Alopecie - Hair loss)

Programme No: 0401



Recommended density (J/cm ²)	2.0
Recommended frequency (Hz)	5.0
Therapy time at max. output (in min.)	1.23
Number of treatments per week	2
Number of treatments total	varies
Recommended BTL probe	red
Recommended output of BTL probe	30 mW

Comment:

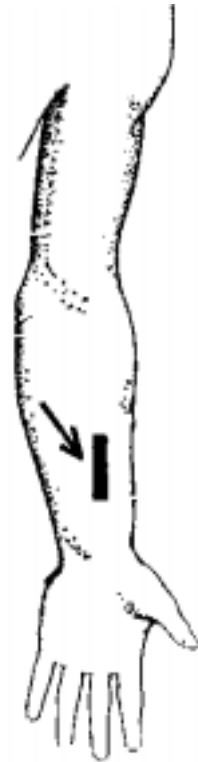
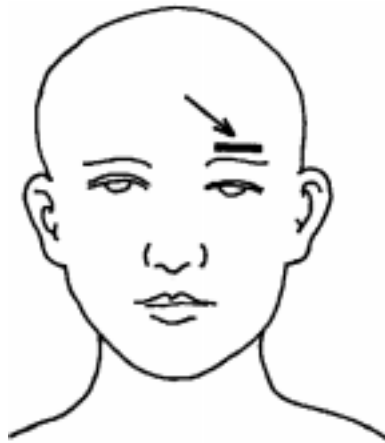
- Irradiate scalp where hair is parted. Continue, section by section, until entire scalp has been treated.
- Total length of application should not exceed 10 minutes per day.
- Hair stops falling during the first 2-3 weeks and hair growth improves in 8-12 weeks.
- Irradiation of the scalp improves blood supply to and nutrition of the hair follicle.
- With androgen alopecies, progression of the condition significantly declines.

BTL

Diagnosis: Cicatrix cheloidum

(keloid scar)

Programme No: 0402



Recommended density (J/cm ²)	3.0 (2.0 – 6.0)
Recommended frequency (Hz)	5.0 (9.12)
Therapy time at max. output (in min.)	2.05
Number of treatments per week	2 – 3
Number of treatments total	10 – 15 (40)
Recommended BTL probe	red
Recommended output of BTL probe	30 mW

Comment:

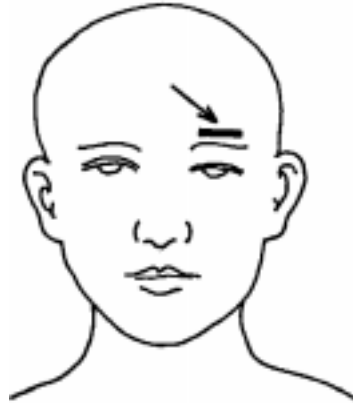
- Irradiate the whole scar.
- Nociceptive activity of keloid scars decreases.
- Irradiate in combination with surgical treatment.
- As a preventive treatment, irradiate persons with keloid forming tendencies.
- The older the scar, the longer the treatment.
- Irradiation decreases coloration of older scars.

BTL

Diagnosis: Cicatrix recens

(fresh scar)

Programme No: 0403, 0404



Recommended density (J/cm ²)	4.0 (3.0 – 7.0)	1 st part of therapy
	4.0	2 nd part of therapy
Recommended frequency (Hz)	cont.	1 st part of therapy
	5.0	2 nd part of therapy
Therapy time at max. output (in min.)	2.13 + 2.46	
Number of treatments per week	daily – 3x per week	
Number of treatments total	5 – 15	
Recommended BTL probe	red	
Recommended output of BTL probe	30 mW	

Comment:

- Irradiate the whole scar.
- Begin irradiation immediately after surgery.
- Acute cases: set a lower dose and irradiate more frequently.
- Chronic cases: set a higher dose and irradiate less frequently.
- Good laser therapy results can be achieved with burns, ulcers and keloid scars.
- According to some experts, it is advisable to irradiate the area 2-3 days prior to surgery, or during the surgery itself.
- Improved oxidation in the cells effects microcirculation in the affected tissue, and improves cellular energy use and waste drainage.
- Laser treatment has an analgesic effect, and reduces infiltration, swelling and haematoma.
- 1st and 2nd part of therapy should be understood as two parts of one therapy session.

BTL

Diagnosis: Combustio

(Burn)

Programme No: 0405



Recommended density (J/cm ²)	5.0 (3.9 – 9.4)
Recommended frequency (Hz)	9.12
Therapy time at max. output (in min.)	3.28
Number of treatments per week	daily – 3x per week
Number of treatments total	15
Recommended BTL probe	red
Recommended output of BTL probe	30 mW

Comment:

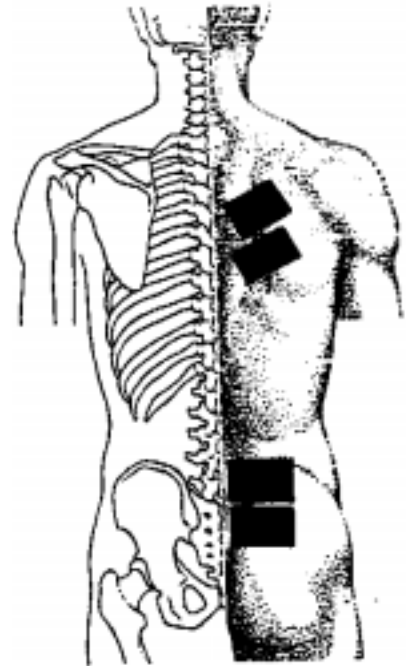
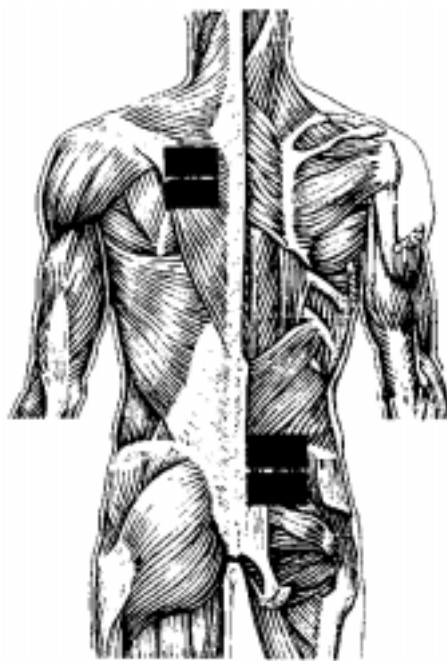
- Irradiation eliminates infection, enhances granulation and epithelialization, reduces scarring, and prevents keloids from forming.
- Begin irradiation around the edges of the burn, and work towards the center.
- Treat the burn medically at the same time.
- Irradiation hastens division of basal cells, which is doubled or tripled. In addition, it reduces capillary hemorrhaging. Laser therapy supports formation of vessels, lymphatic circulation, and decreases pain.

BTL

Diagnosis: **Decubitus**

(Decubitus, Bedsores)

Programme No: 0406



Recommended density (J/cm ²)	4.0 (3.0 – 5.0)
Recommended frequency (Hz)	6.0
Therapy time at max. output (in min.)	2.46
Number of treatments per week	daily
Number of treatments total	min. 1 – 2
Recommended BTL probe	red
Recommended output of BTL probe	30 mW

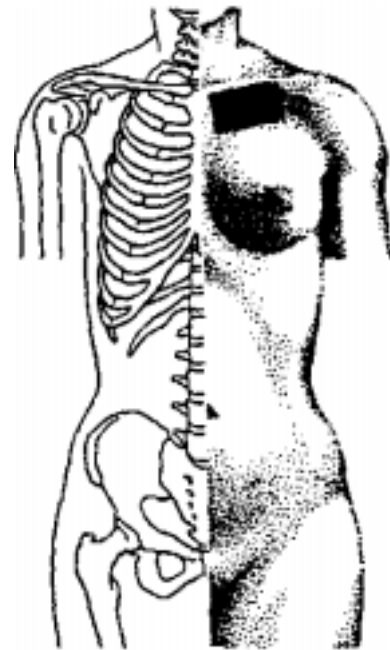
Comment:

- Laser therapy has an analgesic and healing effect.
- Daily irradiation is recommended for chronic conditions.

BTL

Diagnosis: Dermatitis

Programme No: 0407



Recommended density (J/cm ²)	2.0 (1.4 – 2.4)
Recommended frequency (Hz)	5.0
Therapy time at max. output (in min.)	1.23
Number of treatments per week	varies
Number of treatments total	varies
Recommended BTL probe	red
Recommended output of BTL probe	30 mW

Comment:

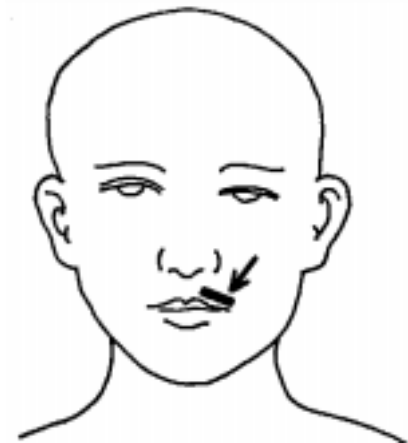
- Laser therapy applied at an acute stage (swollen and itchy skin) can have an anti-pruriginous effect, allowing treatment with sedatives to be decreased or eliminated.
- Reduces inflammation.
- Can be also used for dermatitis that is therapeutically resistant to classical treatment methods.

BTL

Diagnosis: Dermatitis perioralis

(dermatitis around the mouth area)

Programme No: 0408



Recommended density (J/cm ²)	2.0 (1.6 – 2.6)
Recommended frequency (Hz)	5.0
Therapy time at max. output (in min.)	1.23
Number of treatments per week	1 – 2
Number of treatments total	4 – 8 weeks
Recommended BTL probe	red
Recommended output of BTL probe	30 mW

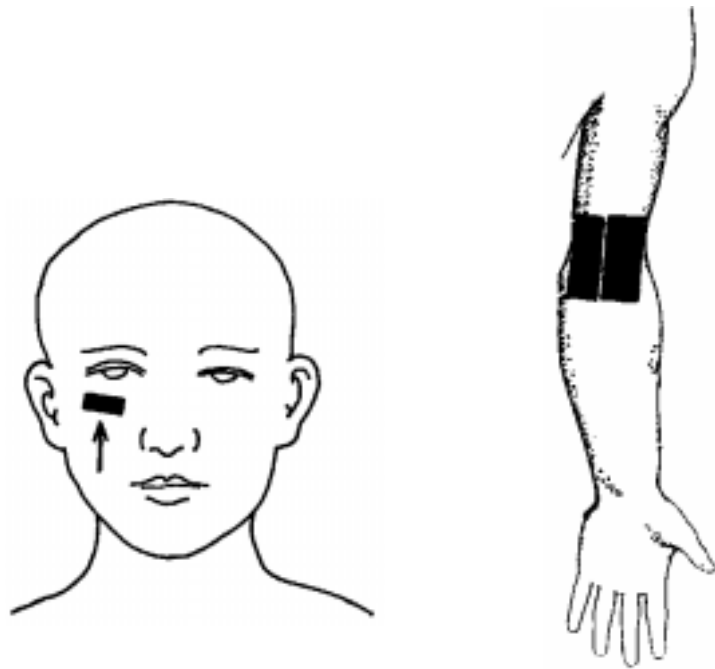
Comment:

- This condition is a form of rosacea.
- Patients are advised to avoid direct sunlight.
- Irradiate affected area.
- Immediately following treatment, skin becomes redder, but the condition improves rapidly after several hours.
- Positive effects usually last 1-2 years.

BTL

Diagnosis: Eczema

Programme No: 0409



Recommended density (J/cm ²)	2.0
Recommended frequency (Hz)	5.0
Therapy time at max. output (in min.)	1.23
Number of treatments per week	daily 1 – 2x per week
Number of treatments total	varies
Recommended BTL probe	red
Recommended output of BTL probe	30 mW

Comment:

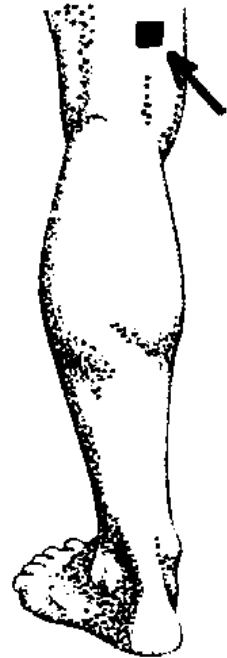
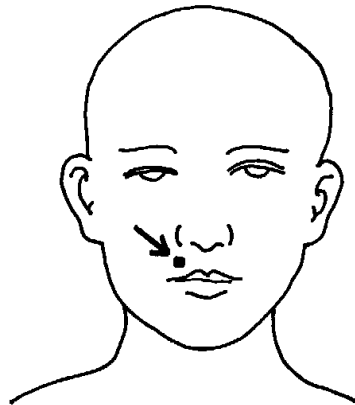
- Causal factors must be eliminated in order to prevent recurrence.
- Periodic eczema, usually associated with colds and infections in winter months, with eruptions usually on the face, neck, etc.
Application: low intensity, low density, freq. 2-5 Hz.
- Chronic eczema (that can affect the patient psychically as well as physically).
Application: lower density, higher frequency. Apply to pruriginous areas.
- Chronic lichenous skin changes type without acute exacerbation.
Application: high intensity, higher frequency.

BTL

Diagnosis: Furunculus

(furuncle)

Programme No: 0410



Recommended density (J/cm ²)	2.0
Recommended frequency (Hz)	2.0
Therapy time at max. output (in min.)	1.23
Number of treatments per week	varies
Number of treatments total	varies
Recommended BTL probe	red
Recommended output of BTL probe	30 mW

Comment:

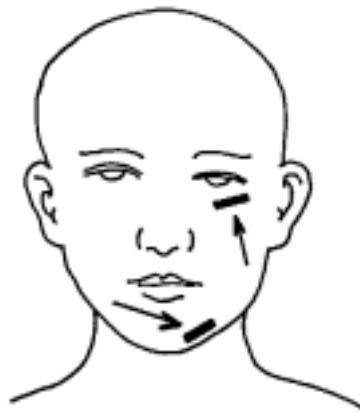
- Irradiate affected areas.

BTL

Diagnosis: **Haematoma**

(Hematoma)

Programme No: 0411



Recommended density (J/cm ²)	1.0
Recommended frequency (Hz)	6.0 (8.0)
Therapy time at max. output (in min.)	0.41
Number of treatments per week	5
Number of treatments total	3 – 10
Recommended BTL probe	red
Recommended output of BTL probe	30 mW

Comment:

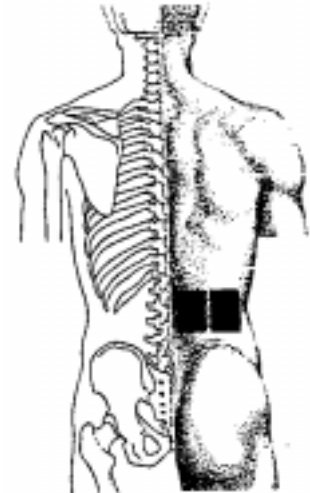
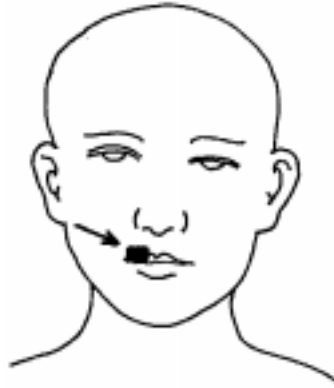
- Acute haematoma
Application: frequency 6 Hz, density 3 J/cm².
- Post-injury haematoma
Application: frequency 8 Hz, density 1 J/cm².
- Suture haematoma
Application: frequency 5-10 Hz; density 0.9-1 J/cm² (if very painful, 1-4 J/cm²). Irradiate around the suture.

BTL

Diagnosis: Herpes – simplex, zoster

(herpes - mostly in the facial area)

Programme No: 0412, 0413



Recommended density (J/cm ²)	3.0 (1.0 – 3.0) 1 st part of therapy 3.0 2 nd part of therapy
Recommended frequency (Hz)	cont. 1 st part of therapy 5.0 (9.12, 4.7) 2 nd part of therapy
Therapy time at max. output (in min.)	1.40 + 2.05
Number of treatments per week	daily – every other day 1 st day 1-2x, then daily
Number of treatments total	3 – 6
Recommended BTL probe	red / infrared
Recommended output of BTL probe	30 mW / 200 mW

Comment:

- Probe: use red light for lips and mucosa, and infrared light for skin.
- Irradiate at the first signs of tension in the tissue.
- Results are better when started in the early stages of the condition.
- Irradiate at the edges of the lesion.
- Doses of sufficient strength must be given because herpes can worsen if only a stimulatory dose is given.
- During the therapy session, irradiate first with continuous mode and then with pulse frequency.
- Irradiation reduces pain.
- Normal healing takes 8 - 14 days, but only 2-4 days with laser therapy.
- Reduces recurrence of the condition.
- Prevents the forming of blisters.
- Has a healing, analgesic, and anti-edema effect.
- 1st and 2nd part of therapy should be understood as two parts of one therapy session.

BTL

Diagnosis: Lichen planus

(lichen)

Programme No: 0414



Recommended density (J/cm ²)	(2.5)
- acuta	2.5 (1.5 – 3.5)
- chronica	4.0 (3.0 – 5.0)
Recommended frequency (Hz)	5.0
Therapy time at max. output (in min.)	1.44
Number of treatments per week	
- acuta	daily – 3x per week
- chronica	2 – 4x per month
Number of treatments total	varies
Recommended BTL probe	red
Recommended output of BTL probe	30 mW

Comment:

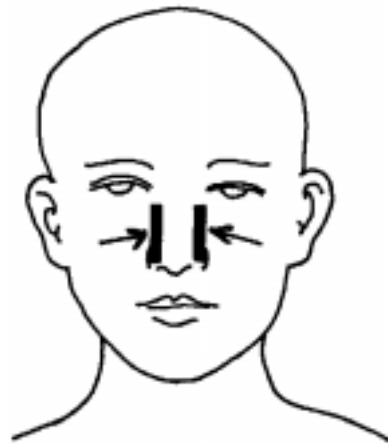
- Laser therapy quickly relieves itching and decreases the area of lichen.
- Given the various forms and types, parameters must be set according to patient reaction.
- Lichen ruber planus: density of 2-3 J/cm², irradiate until the lichen disappears.

BTL

Diagnosis: Rosacea

(roseola)

Programme No: 0415



Recommended density (J/cm ²)	2.0
Recommended frequency (Hz)	5.0
Therapy time at max. output (in min.)	1.23
Number of treatments per week	varies
Number of treatments total	varies
Recommended BTL probe	red
Recommended output of BTL probe	30 mW

Comment:

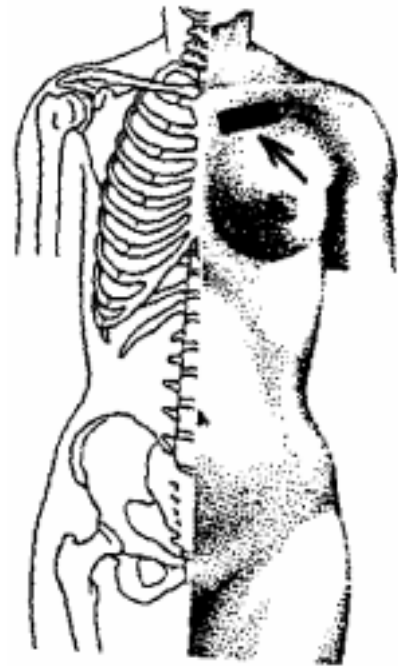
- There are several forms of rosacea -- from occasional red to purely pustular form.

BTL

Diagnosis: **Sanatio postoperativa**

(post-surgical healing)

Programme No: 0416



Recommended density (J/cm ²)	3.0 (1.0 – 4.0)
Recommended frequency (Hz)	5.0 (5.0 – 10.0)
Therapy time at max. output (in min.)	2.05
Number of treatments per week	1 – 2
Number of treatments total	1 – 4
Recommended BTL probe	red
Recommended output of BTL probe	30 mW

Comment:

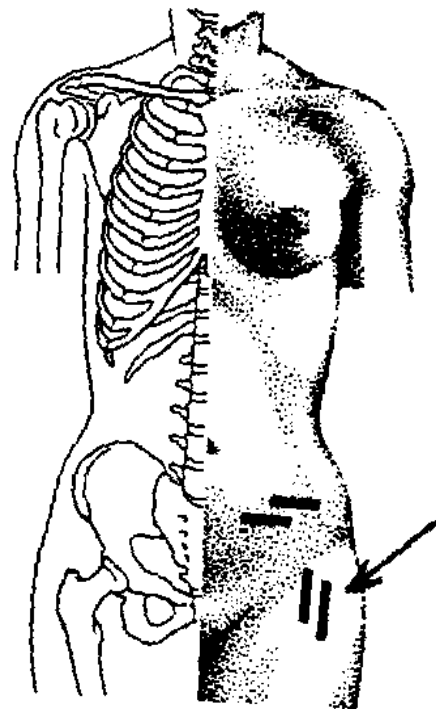
- Accelerates healing of wounds.
- Improves blood supply.

BTL

Diagnosis: Striae

(stria)

Programme No: 0417



Recommended density (J/cm ²)	3.0 (0.5 – 4.0)
Recommended frequency (Hz)	8.4 (5.2)
Therapy time at max. output (in min.)	2.05
Number of treatments per week	2 – 3
Number of treatments total	20 – 30
Recommended BTL probe	red
Recommended output of BTL probe	30 mW

Comment:

- The sooner the treatment starts the better the result is.
- In neglected cases, therapy can last up to 100 sessions.

BTL

Diagnosis: **Ulcus cruris**

(shin ulcer)

Programme No: 0418, 0419



Recommended density (J/cm ²)	3.0 (1.4 – 4.4)
Recommended frequency (Hz)	cont. 1 st part of therapy 5.0 2 nd part of therapy
Therapy time at max. output (in min.)	1.40 + 2.05
Number of treatments per week	2 – 3 (daily)
Number of treatments total	8 – 20
Recommended BTL probe	red
Recommended output of BTL probe	30 mW

Comment:

- Excellent clinical effect.
- During 1st part of therapy, use continuous mode with higher power.
- During 2nd part of therapy, use pulse frequency and lower power.
- If the parameters are well-selected, a formerly unhealable condition can be completely cured.
- Ulcus cruris varicosum: Irradiate daily for the first few sessions, then 2 or 3x a week.
- Irradiate around the edges of the ulcer.
- 1st and 2nd part of therapy should be understood as two parts of one therapy session.

BTL